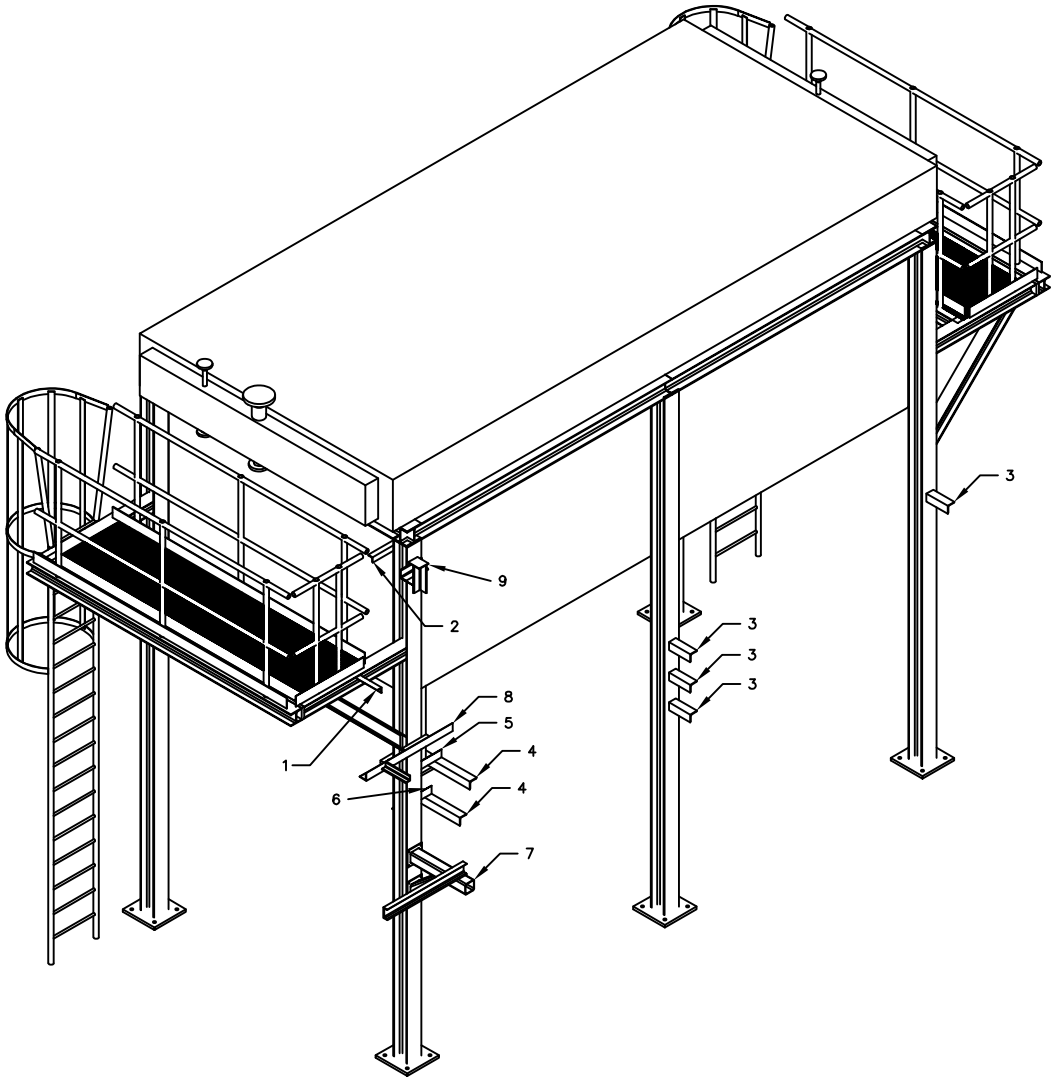
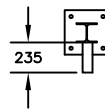
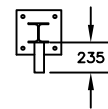
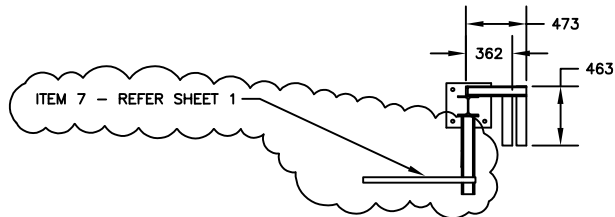
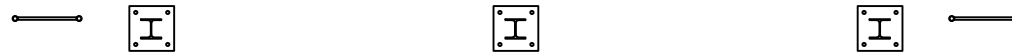
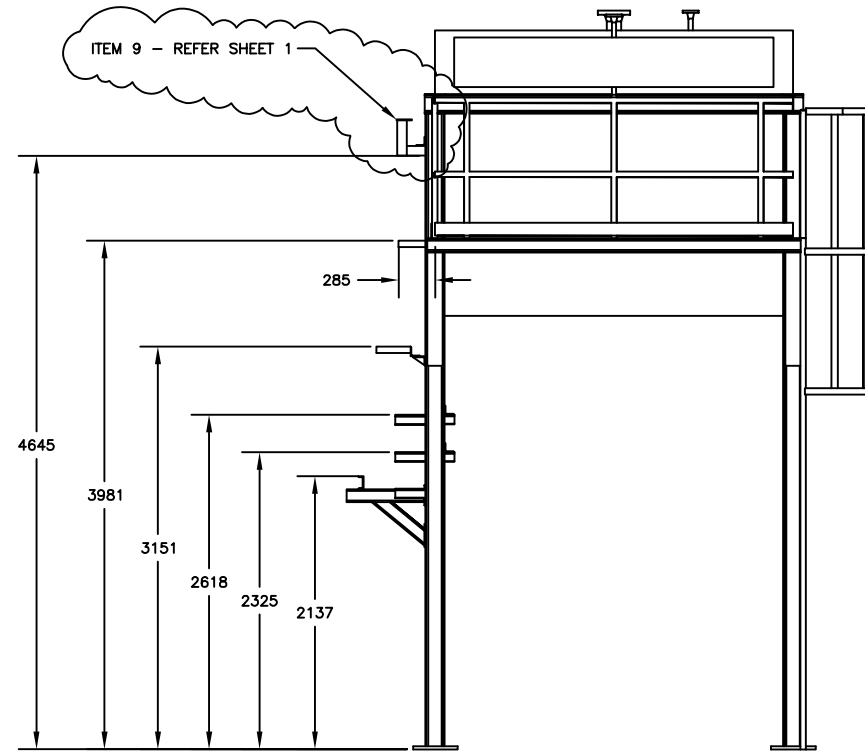
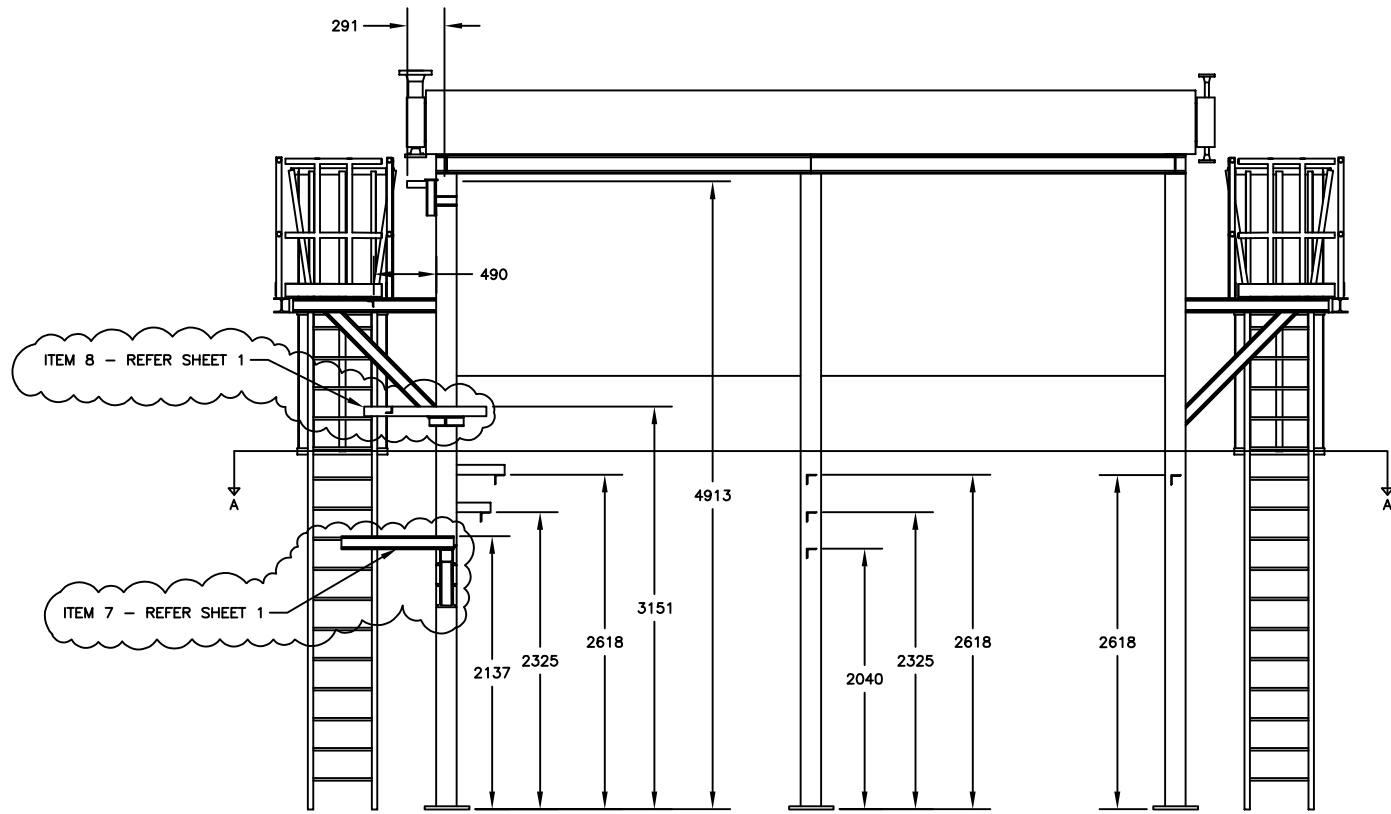


Bill of Materials					
Item	Description/ DWG#	Size	Length	Material	Qty
1	Angle Support	L2x2x1/4	282.311	A36	1
2	Angle Support	L2x2x1/4	292.491	A36	1
3	Angle Support	L3x3x1/4	235.036	A36	4
4	Angle Support	L3x3x1/4	463.236	A36	2
5	Angle Support	L3x3x1/4	457.897	A36	1
6	Angle Support	L3x3x1/4	362.291	A36	1
7	MPED07-60792		BOLTED		1
8	MPED07-60793		BOLTED		1
9	MPED07-60794		WELDED		1



- NOTES:
1. ALL TAPPED BRANCHES TO INCLUDE TWO (2) GUSSETS LOCATED 90° APART.
 2. ALL SUPPORT WELDS SHALL BE CONTINUOUSLY WELDED.
 3. MATERIAL TEST REPORTS ARE REQUIRED.
 4. ALL MATERIALS USED SHALL BE NEW & UNUSED.
 5. BOM GENERATED ARE FOR PIPE SUPPORTS ATTACHED TO THE AIR COOLER.

1	F	08.10.24	FOR APPROVAL	AJD	AJD	IES	SES
0	F	26.08.24	FOR APPROVAL	AJD	AJD	IES	SES
REV.	STATUS	DATE	PURPOSE OF ISSUE	PREP.	CHKD.	APPD.	AUTH.
CLIENT: SERVICE: LOCATION: UNIT TAG NO.:							
VENDOR LOGO							
Contract No.							
P.O. No.		SCALE					
DRAWING TITLE: <div>LOCATION OF PIPE SUPPORTS ATTACHED TO AIR COOLER</div>							
DRAWING NO.				REV.	SHEET No.	SIZE	
				1	1 OF 2	D	



SECTION A-A

1	F	08.10.24	FOR APPROVAL	AJD	AJD	IES	SES
0	F	26.08.24	FOR APPROVAL	AJD	AJD	IES	SES
REV.	STATUS	DATE	PURPOSE OF ISSUE	PREP.	CHKD.	APPD.	AUTH.
CLIENT: SERVICE: LOCATION: UNIT TAG NO.:							
VENDOR LOGO							
Contract No.		P.O No.					
DRAWING TITLE: LOCATION OF PIPE SUPPORTS ATTACHED TO AIR COOLER							
DRAWING NO.				REV.	SHEET No.	SIZE	
				1	2 OF 2	D	